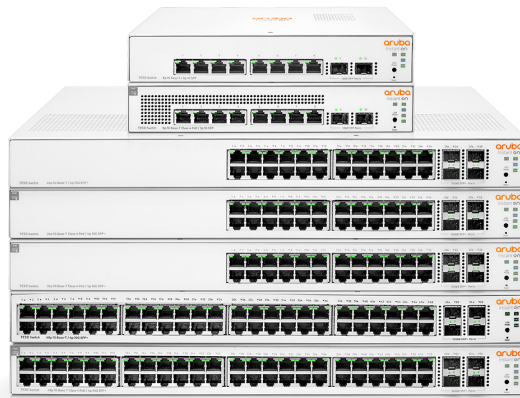


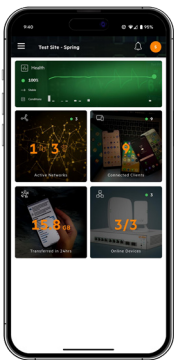
# HPE Networking Instant On Switch Series 1930

High-performance, full Power-over-Ethernet switches



## Easy switch management

Deploy HPE Networking Instant On Switch Series 1930 with management that fits your business best — Instant On cloud management or the local web GUI — all at no extra cost.



**Small business networks support many of the same devices and applications that larger enterprise networks do — but they don't have the IT staff to install, configure, and monitor the network to deliver the performance employees and customers expect.**

The HPE Networking Instant On Switch Series 1930 is a simple networking solution that offers reliable, secure, worry-free connections at a price that won't break the bank. Instant On 1930 supports business growth with SFP and SFP+ uplink ports, full PoE, and smart cloud management. Whether it's tracking and tackling IoT device sprawl, powering smart lights, or connecting workstations and access points together, the 1930 switches offer something for every environment.

These access switches are offered in 8-, 24-, and 48-port configurations with or

without Class 4 Power-over-Ethernet (PoE) on all ports. The 1930 Switch Series also has SFP and SFP+ uplink ports that can be used to expand the network across a single building or multiple buildings using HPE Networking Instant On Transceivers.

And with enterprise-class features like Energy-Efficient Ethernet (EEE), Spanning Tree Protocol (STP), and 802.1X port security built-in and already enabled, building out a reliable and robust network has never been simpler.

## Benefits

- Set up your switch in minutes**  
 Get step-by-step guidance via the Instant On mobile app
- Manage it anytime, anywhere**  
 Monitor and manage performance with the Instant On mobile app or cloud-based web portal
- Connect and power high-bandwidth devices through one cable**  
 Save time and money and get the flexibility you crave with Power-over-Ethernet (Class 4) technology
- Secure your data and information**  
 Keep your business safe with ever-evolving security measures and protocols

## Technical specifications



	<b>HPE Networking Instant On Switch Series 1930 8G 2SFP (JL680A)</b>	<b>HPE Networking Instant On Switch Series 1930 8G Class4 PoE 2SFP 124W (JL681A)</b>	<b>HPE Networking Instant On Switch Series 1930 24G 4SFP/SFP+ (JL682A)</b>	<b>HPE Networking Instant On Switch Series 1930 24G Class4 PoE 4SFP/SFP+ 195W (JL683B)</b>	<b>HPE Networking Instant On Switch Series 1930 24G Class4 PoE 4SFP/SFP+ 370W (JL684B)</b>	<b>HPE Networking Instant On Switch Series 1930 48G 4SFP/SFP+ (JL685A)</b>	<b>HPE Networking Instant On Switch Series 1930 48G Class4 PoE 4SFP/SFP+ 370W (JL686B)</b>
--	--	--	--	--	--	--	--

<b>Gigabit and Uplink ports</b>	8x 10/100/1000 Base-T Ports 2x SFP 1GbE ports	8x 10/100/1000 Base-T with CL4 PoE ports 2x SFP 1GbE ports	24x 10/100/1000 Base-T ports 4x SFP+ 10GbE ports	24x 10/100/1000 Base-T with CL4 PoE ports 4x SFP+ 10GbE ports	24x 10/100/1000 Base-T with CL4 PoE ports 4x SFP+ 10GbE ports	48x 10/100/1000 Base-T ports 4x SFP+ 10GbE ports	48x 10/100/1000 Base-T with CL4 PoE ports 4x SFP+ 10GbE ports
<b>Dimensions (W x D x H)</b>	25.4 x 15.95 x 4.39 cm	25.4 x 25.4 x 4.39 cm	44.25 x 22.15 x 4.39 cm	44.25 x 26.47 x 4.39 cm	44.25 x 26.47 x 4.39 cm	44.25 x 28.24 x 4.39 cm	44.25 x 32.26 x 4.39 cm
<b>Weight</b>	2.55 lb (1.16 kg)	4.66 lb (2.11 kg)	5.32 lb (2.41 kg)	7.69 lb (3.49 kg)	8.23 lb (3.73 kg)	6.91 lb (3.13 kg)	10.12 lb (4.59 kg)
<b>Throughput capacity (Mpps)</b>	14.9 Mpps	14.9 Mpps	95 Mpps	95 Mpps	95 Mpps	131 Mpps	131 Mpps
<b>Capacity</b>	20 Gbps	20 Gbps	128 Gbps	128 Gbps	128 Gbps	176 Gbps	176 Gbps
<b>Reliability MTBF (years)</b>	178	95	158	76	71	114	57
<b>PoE power</b>	–	124W Class 4 PoE	–	195W Class 4 PoE	370W Class 4 PoE	–	370W Class 4 PoE
<b>Warranty</b>	Limited Lifetime Warranty	Limited Lifetime Warranty	Limited Lifetime Warranty	Limited Lifetime Warranty	Limited Lifetime Warranty	Limited Lifetime Warranty	Limited Lifetime Warranty